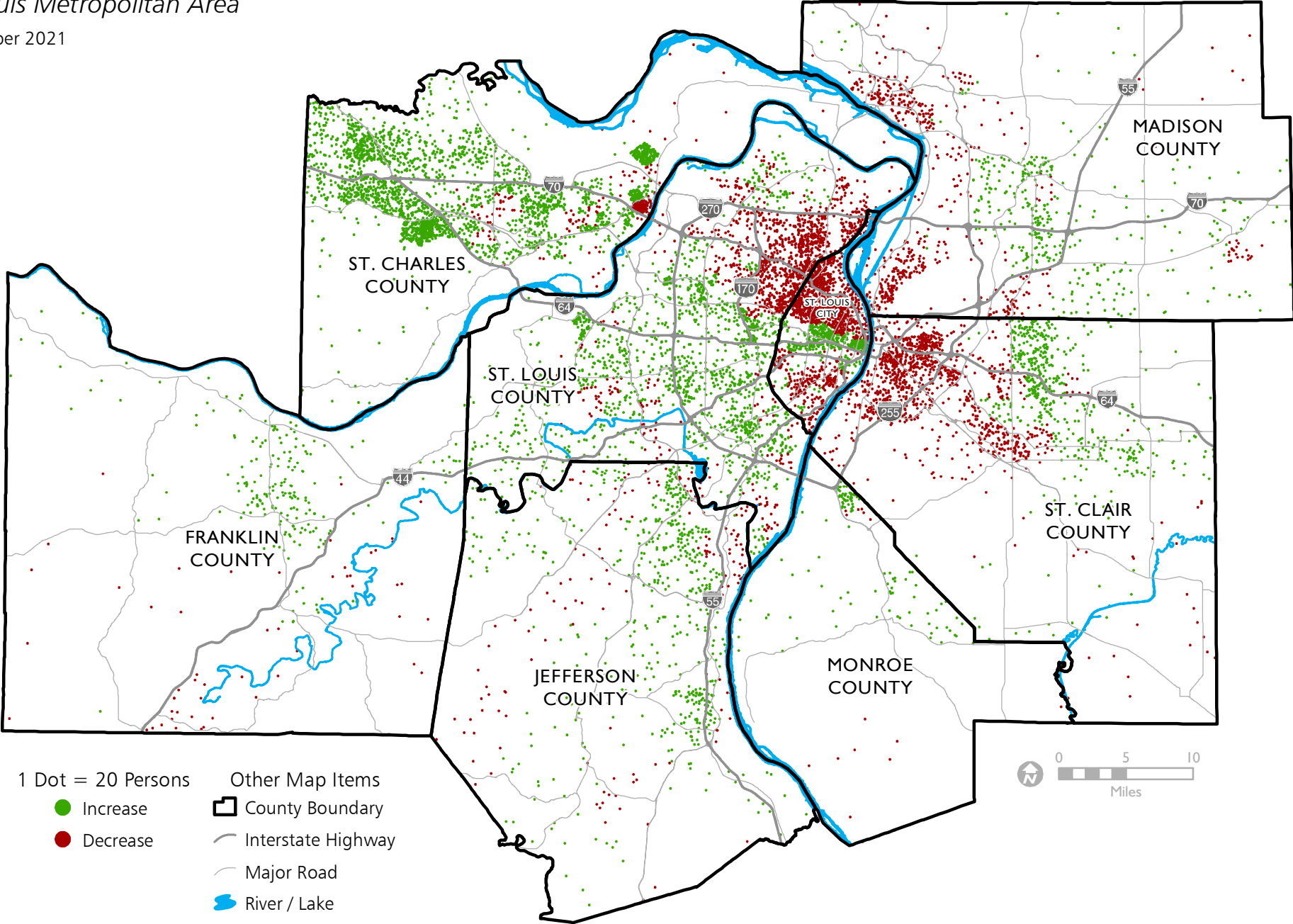


Population Change, 2010-2020

St. Louis Metropolitan Area

September 2021



1 Dot = 20 Persons

- Increase
- Decrease

Other Map Items

- ▭ County Boundary
- Interstate Highway
- Major Road
- River / Lake

Dots are randomly placed within 2020 Census tracts.
Tract boundaries are not shown on the map.

Sources: 2020 Census State Redistricting Data
(Public Law 94-171) Summary File Illinois, Missouri;
East-West Gateway Council of Governments

