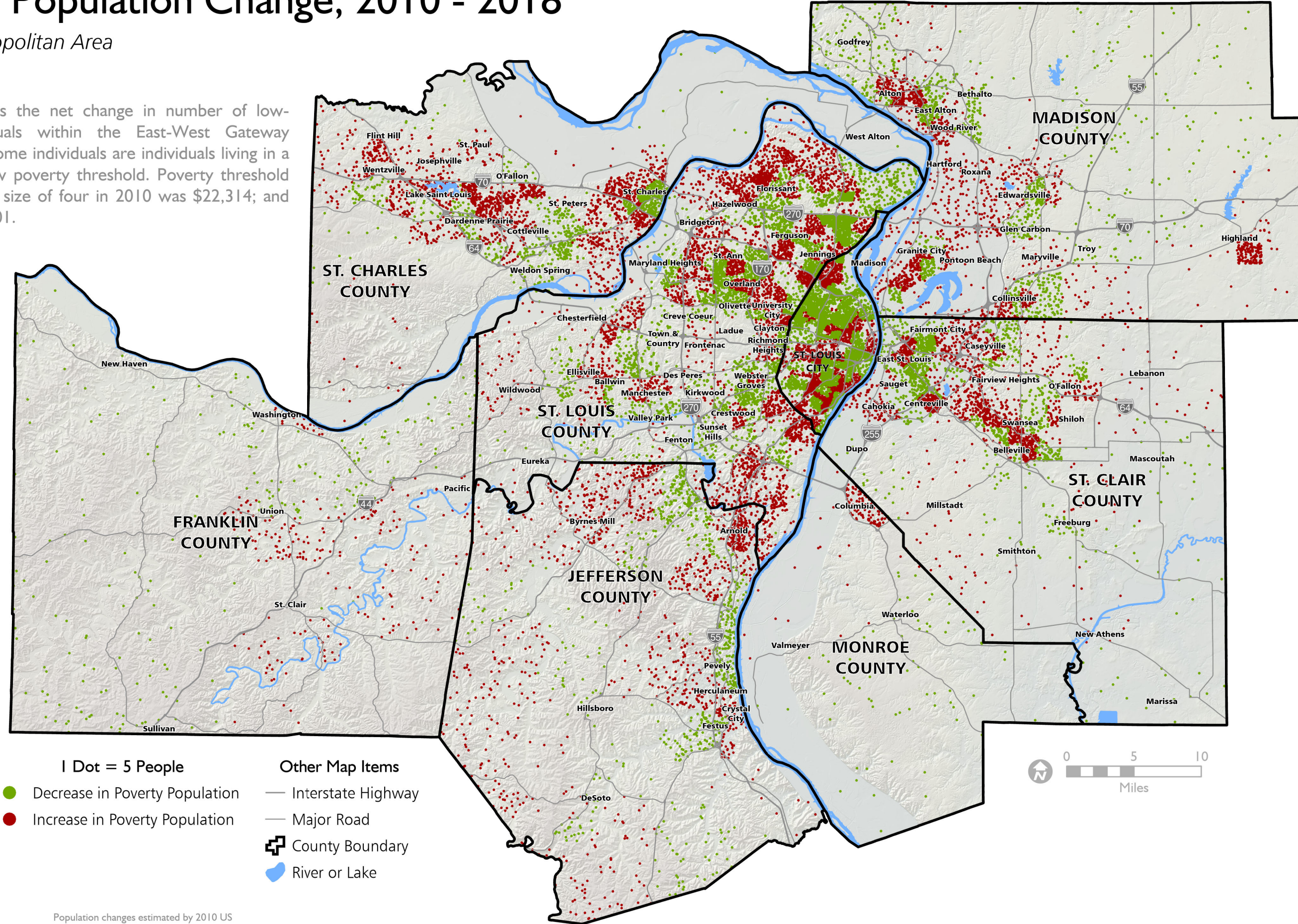


# Poverty Population Change, 2010 - 2018

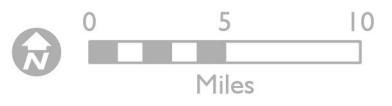
St. Louis Metropolitan Area

June 2020

This map shows the net change in number of low-income individuals within the East-West Gateway region. Low-income individuals are individuals living in a household below poverty threshold. Poverty threshold for a household size of four in 2010 was \$22,314; and 2018 was \$25,701.



- 1 Dot = 5 People
- Decrease in Poverty Population
- Increase in Poverty Population
- Other Map Items
- Interstate Highway
- Major Road
- ⊕ County Boundary
- 🌊 River or Lake



Population changes estimated by 2010 US Census Tracts. Dots are randomly placed within the Census Tracts. Census Tract boundaries not shown on map.

Sources: U.S. Census Bureau, American Community Survey, 5-Year Estimates (2014 - 2018); East-West Gateway Council of Governments