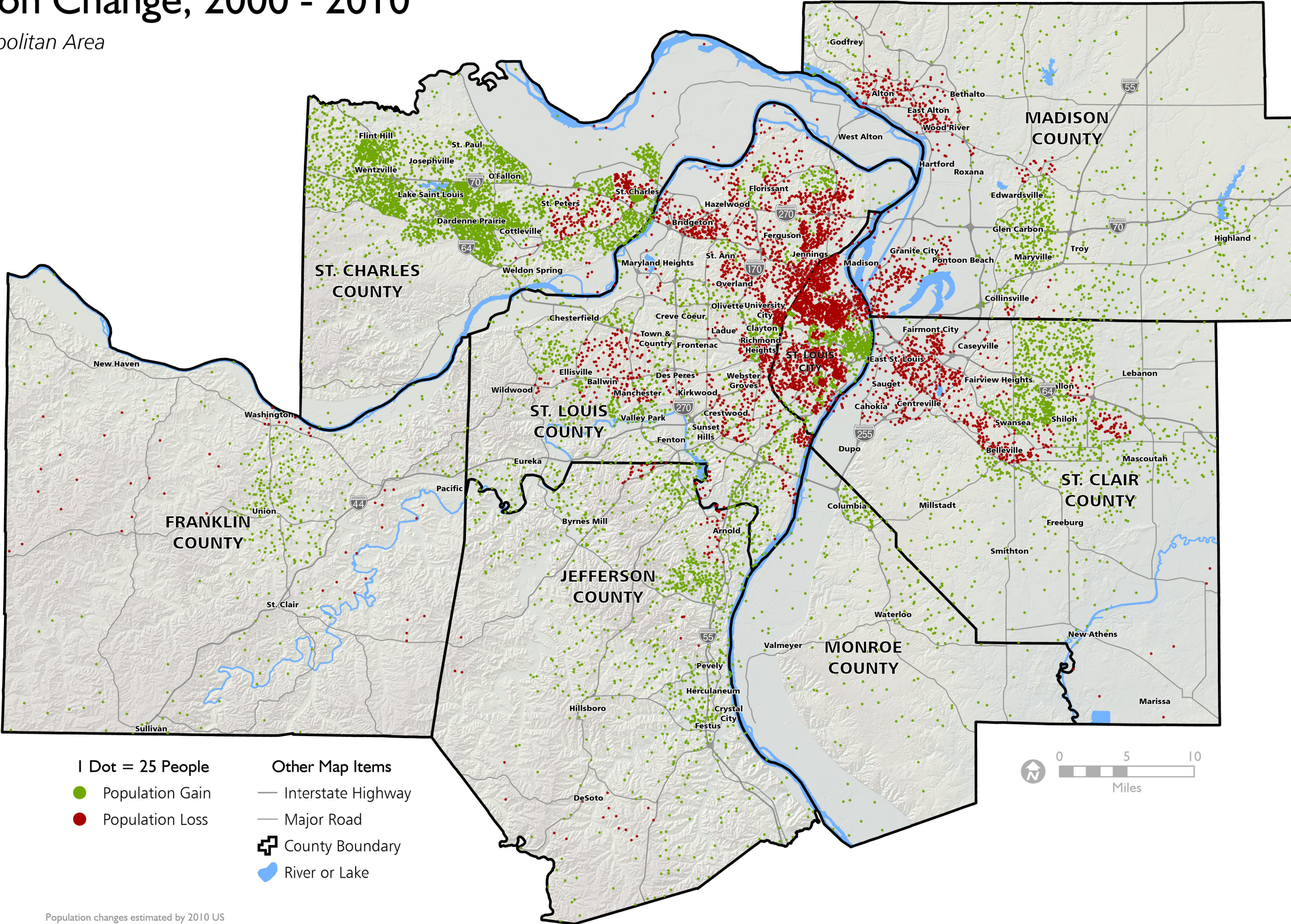


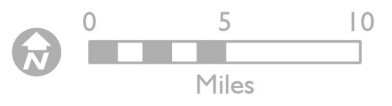
Population Change, 2000 - 2010

St. Louis Metropolitan Area
May 2020



- 1 Dot = 25 People
- Population Gain
- Population Loss
- Other Map Items
- Interstate Highway
- Major Road
- ⊕ County Boundary
- 🌊 River or Lake

Population changes estimated by 2010 US Census Tracts. Dots are randomly placed within the Census Tracts. Census Tract boundaries not shown on map.



Sources: US Census Bureau, 2000, 2010;
East-West Gateway Council of Governments