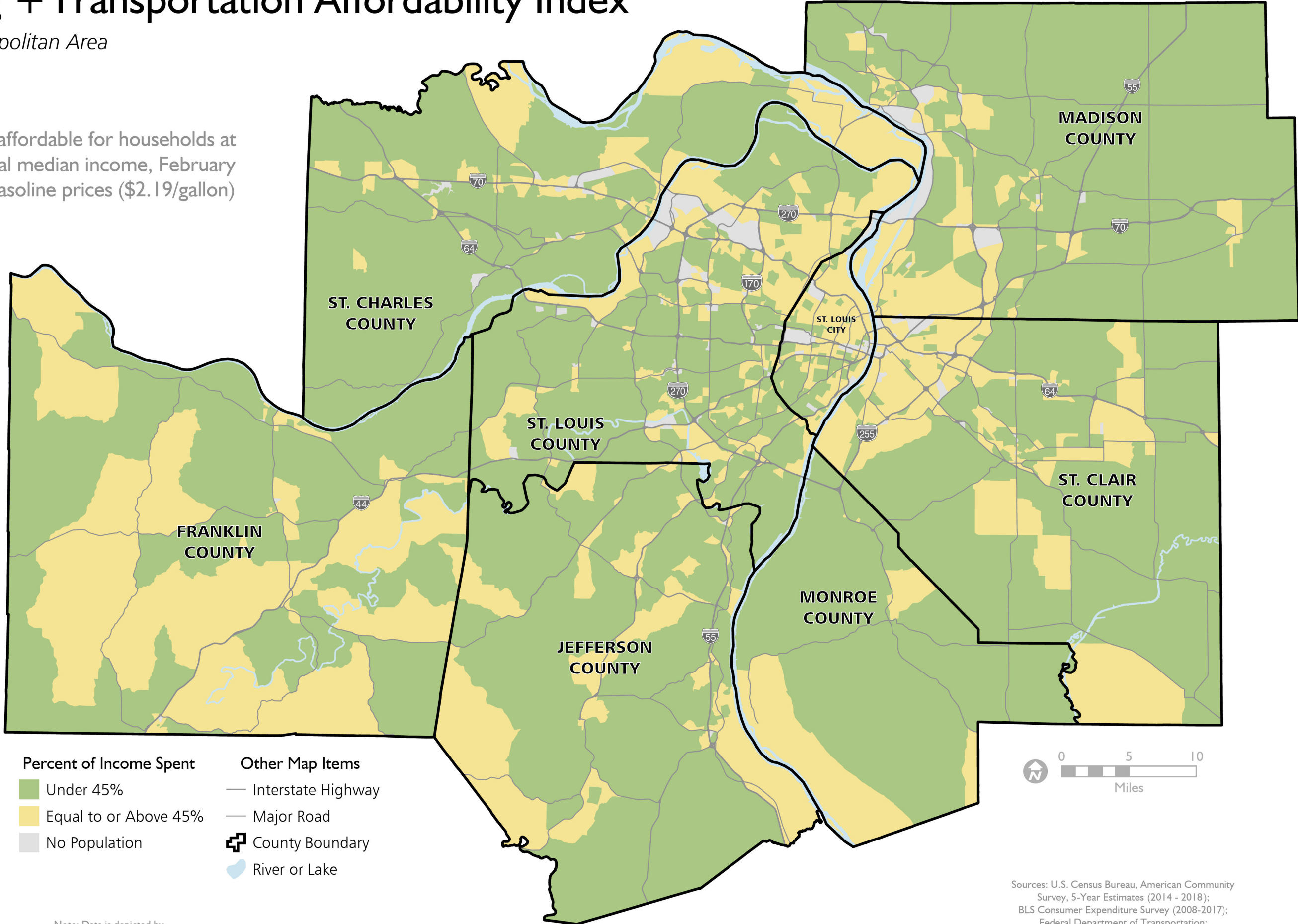


# Housing + Transportation Affordability Index

St. Louis Metropolitan Area

June 2020

Places affordable for households at the local median income, February 2020 gasoline prices (\$2.19/gallon)



**Percent of Income Spent**

- Under 45%
- Equal to or Above 45%
- No Population

**Other Map Items**

- Interstate Highway
- Major Road
- County Boundary
- River or Lake



Note: Data is depicted by Transportation Analysis Zones (TAZ). TAZ boundaries are not shown.

Sources: U.S. Census Bureau, American Community Survey, 5-Year Estimates (2014 - 2018); BLS Consumer Expenditure Survey (2008-2017); Federal Department of Transportation; Money Zine Car Depreciation Calculator; East-West Gateway Council of Governments