

Dam Hazard

St. Louis Metropolitan Area

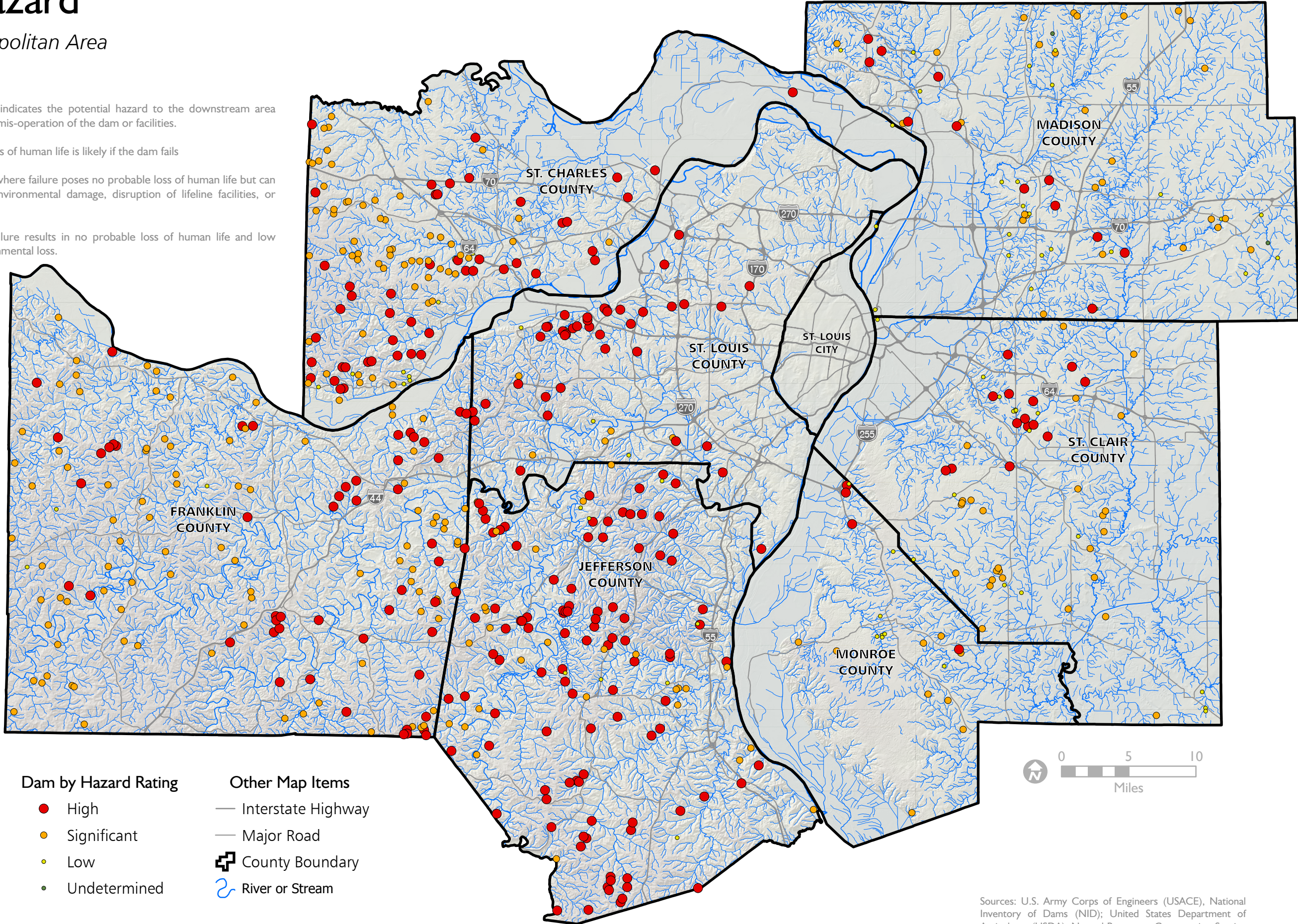
May 2020

The dam hazard rating indicates the potential hazard to the downstream area resulting from failure or mis-operation of the dam or facilities.

HIGH: A dam where loss of human life is likely if the dam fails

SIGNIFICANT: A dam where failure poses no probable loss of human life but can cause economic loss, environmental damage, disruption of lifeline facilities, or impact other concerns

LOW: A dam where failure results in no probable loss of human life and low economic and/or environmental loss.



Dam by Hazard Rating

- High
- Significant
- Low
- Undetermined

Other Map Items

- Interstate Highway
- Major Road
- ⊞ County Boundary
- ~ River or Stream

Sources: U.S. Army Corps of Engineers (USACE), National Inventory of Dams (NID); United States Department of Agriculture (USDA), Natural Resources Conservation Service (NRCS) - National Geospatial Center of Excellence; National Hydrography Dataset (NHD); US Geological Survey (USGS); East-West Gateway Council of Governments