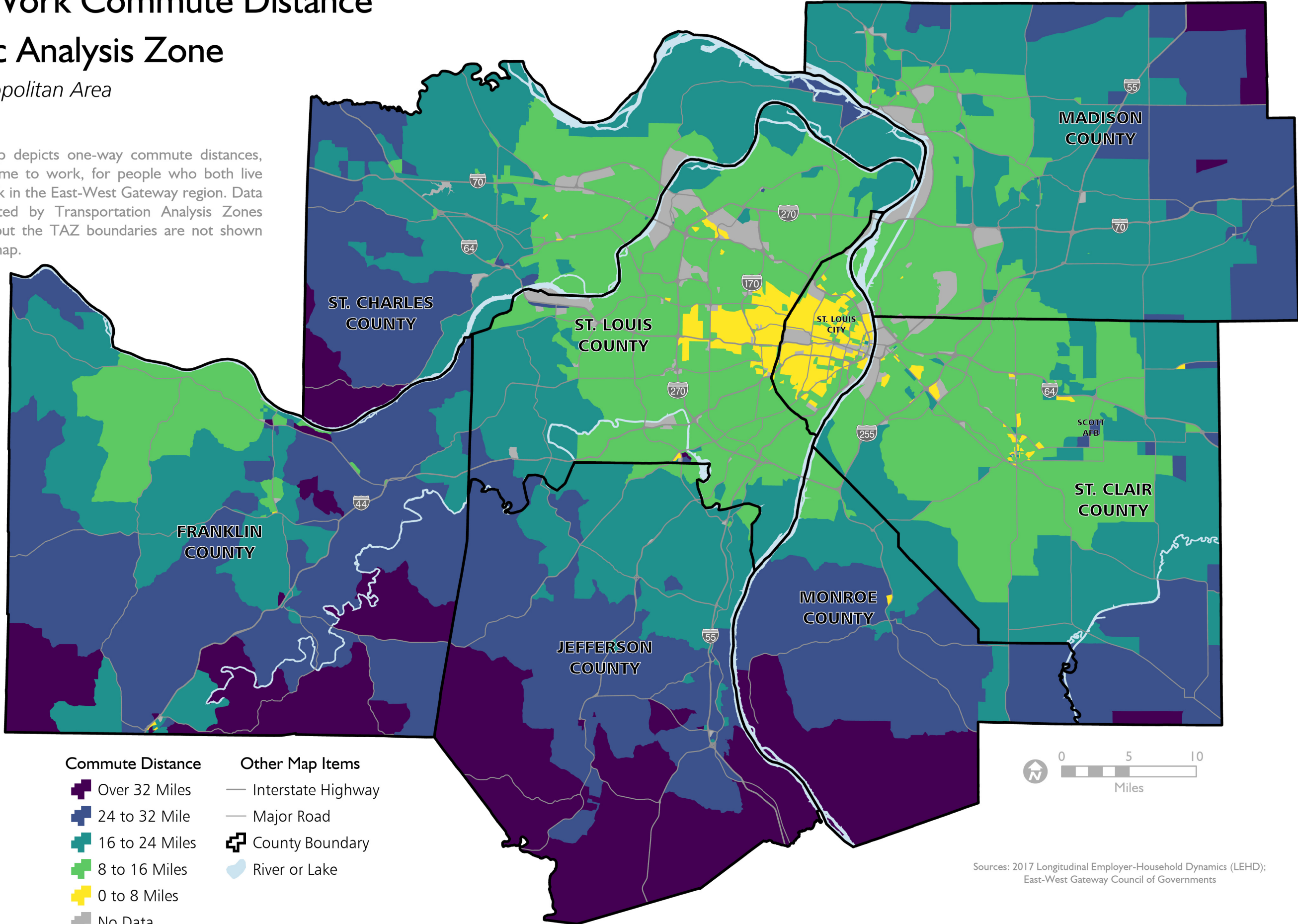


Median Work Commute Distance by Traffic Analysis Zone

St. Louis Metropolitan Area
May 2020

This map depicts one-way commute distances, from home to work, for people who both live and work in the East-West Gateway region. Data is depicted by Transportation Analysis Zones (TAZ), but the TAZ boundaries are not shown on this map.



- | Commute Distance | Other Map Items |
|------------------|--------------------|
| Over 32 Miles | Interstate Highway |
| 24 to 32 Mile | Major Road |
| 16 to 24 Miles | County Boundary |
| 8 to 16 Miles | River or Lake |
| 0 to 8 Miles | |
| No Data | |



Sources: 2017 Longitudinal Employer-Household Dynamics (LEHD); East-West Gateway Council of Governments