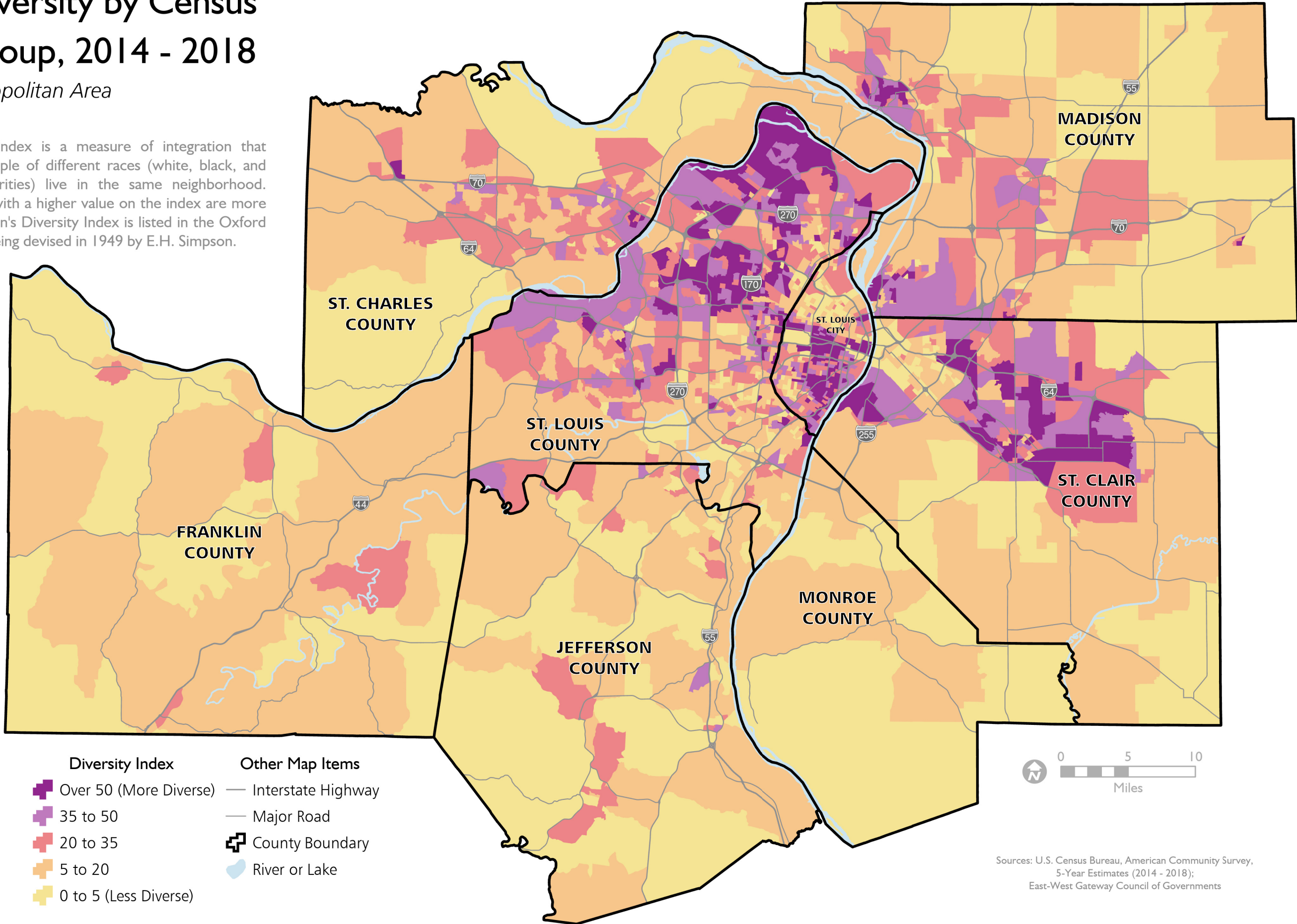


# Racial Diversity by Census Block Group, 2014 - 2018

St. Louis Metropolitan Area

May 2020

The diversity index is a measure of integration that indicates if people of different races (white, black, and nonblack minorities) live in the same neighborhood. Census tracts with a higher value on the index are more diverse. Simpson's Diversity Index is listed in the Oxford Reference as being devised in 1949 by E.H. Simpson.



- | Diversity Index        | Other Map Items    |
|------------------------|--------------------|
| Over 50 (More Diverse) | Interstate Highway |
| 35 to 50               | Major Road         |
| 20 to 35               | County Boundary    |
| 5 to 20                | River or Lake      |
| 0 to 5 (Less Diverse)  |                    |



Sources: U.S. Census Bureau, American Community Survey, 5-Year Estimates (2014 - 2018); East-West Gateway Council of Governments

Note: Data is depicted by 2010 Census block groups. Tract boundaries are not shown.