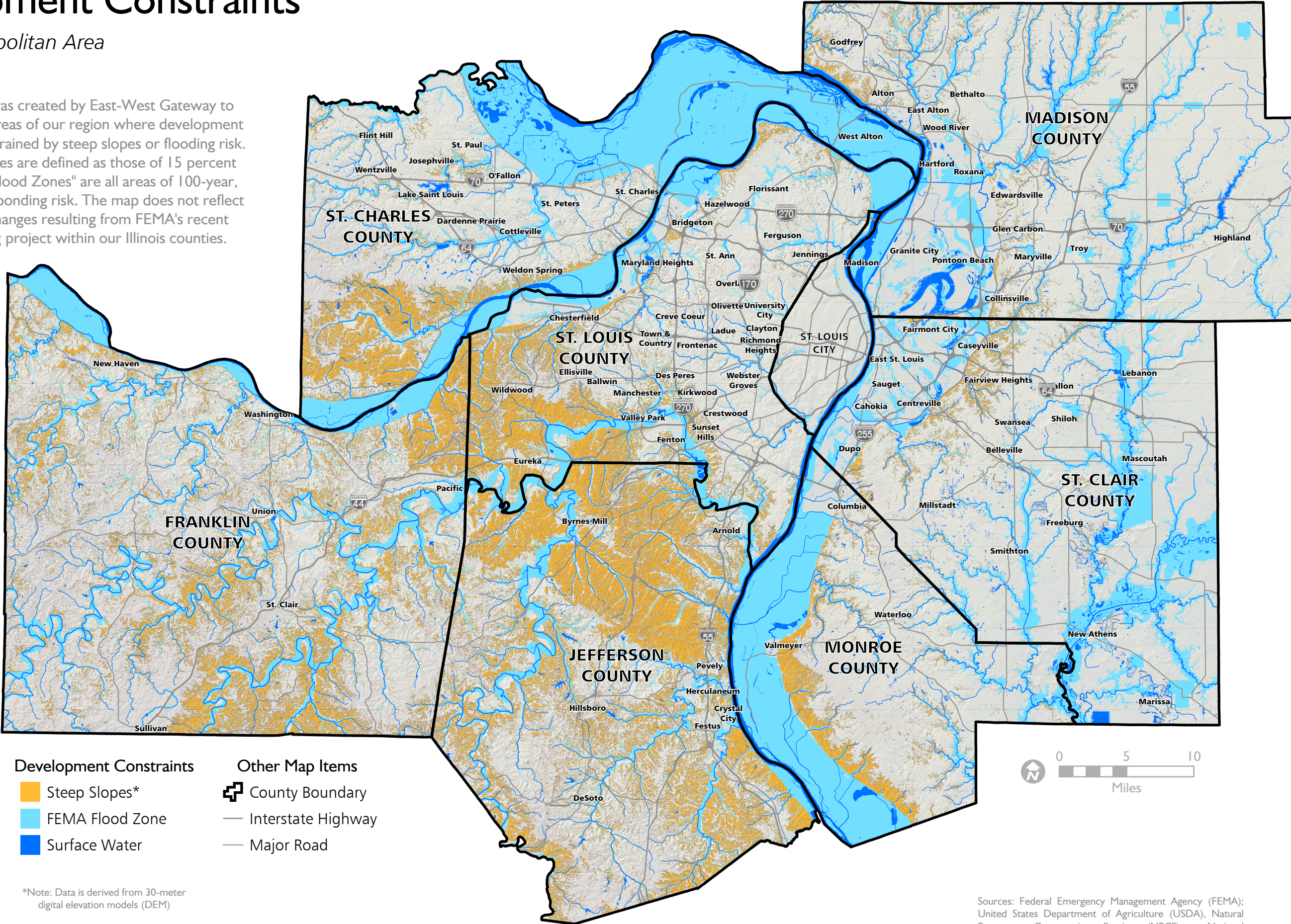


Development Constraints

St. Louis Metropolitan Area

April 2020

This map was created by East-West Gateway to display the areas of our region where development may be constrained by steep slopes or flooding risk. "Steep" slopes are defined as those of 15 percent and over. "Flood Zones" are all areas of 100-year, 500-year or ponding risk. The map does not reflect possible changes resulting from FEMA's recent remapping project within our Illinois counties.



- | | |
|--|---|
| Development Constraints | Other Map Items |
| Steep Slopes* | County Boundary |
| FEMA Flood Zone | Interstate Highway |
| Surface Water | Major Road |

*Note: Data is derived from 30-meter digital elevation models (DEM)



Sources: Federal Emergency Management Agency (FEMA); United States Department of Agriculture (USDA), Natural Resources Conservation Service (NRCS) - National Geospatial Center of Excellence; National Hydrography Dataset (NHD); US Geological Survey (USGS); East-West Gateway Council of Governments

