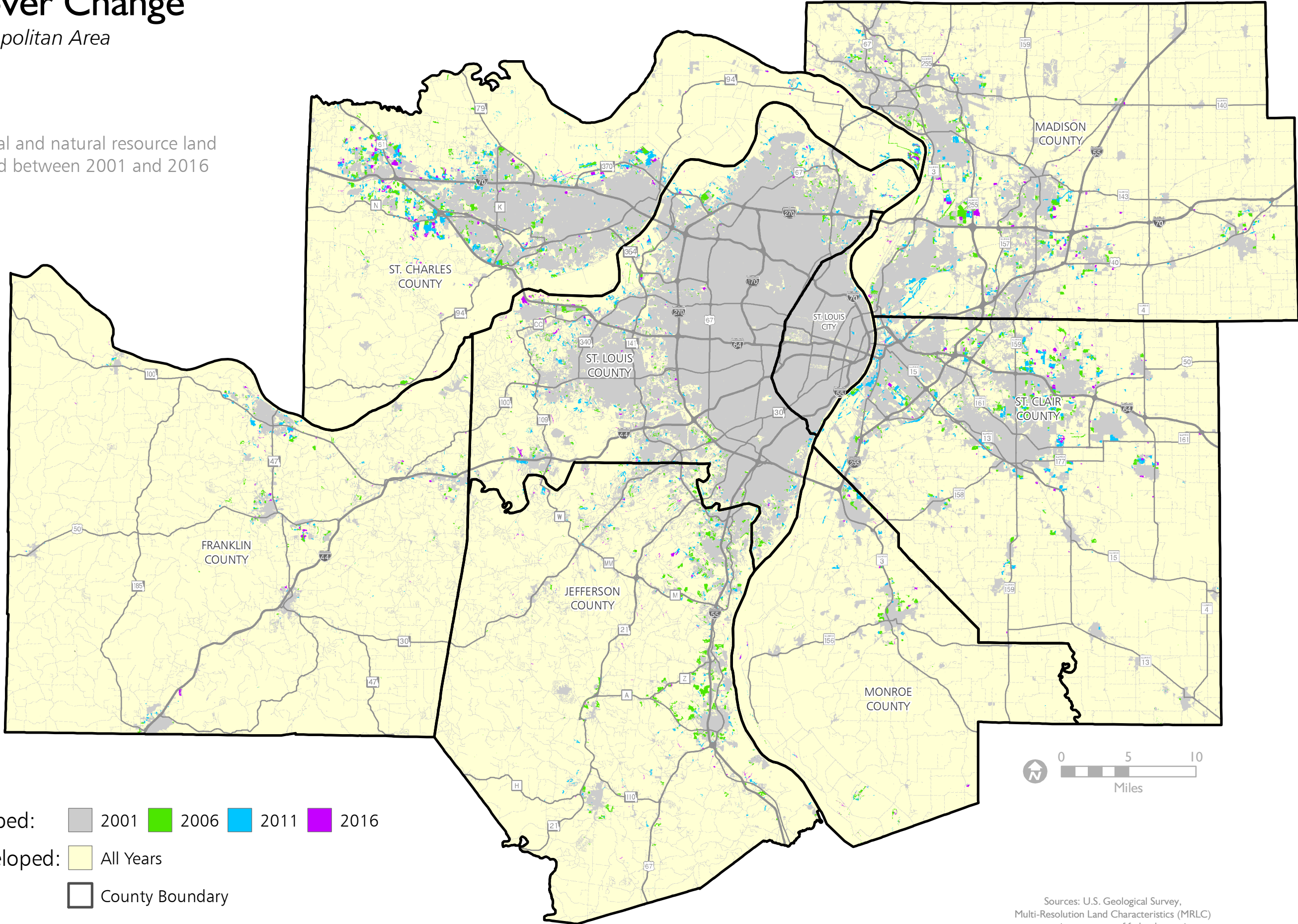


# Land Cover Change

St. Louis Metropolitan Area

August 2019

Agricultural and natural resource land developed between 2001 and 2016



- Developed: 2001 2006 2011 2016
- Undeveloped: All Years
- Other: County Boundary



Sources: U.S. Geological Survey, Multi-Resolution Land Characteristics (MRLC) consortium, a group of federal agencies; East-West Gateway Council of Governments



EAST-WEST GATEWAY Council of Governments