

Levees and Levee Protected Areas

St. Louis Metropolitan Area

May 2019

LEGEND

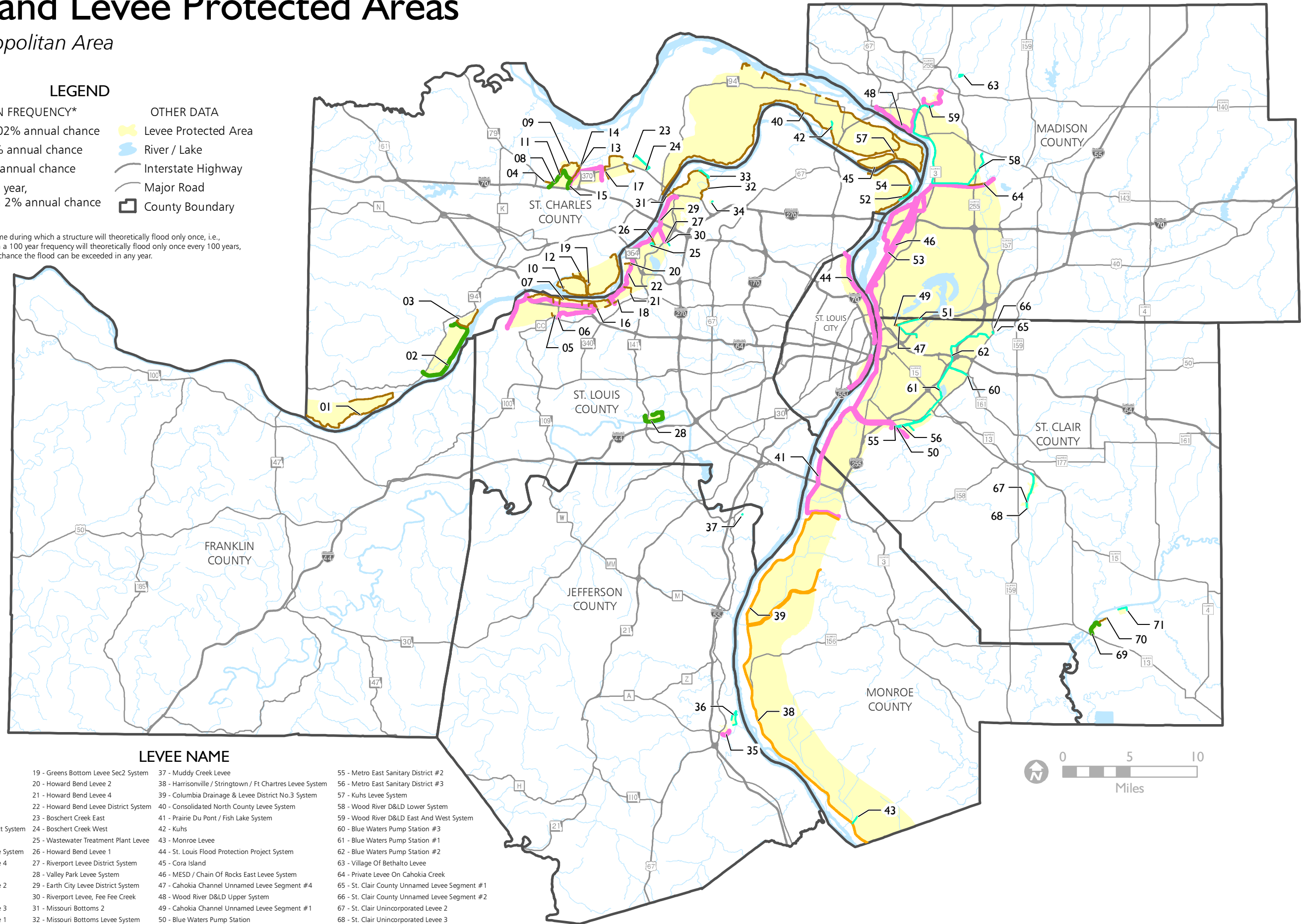
LEEVE DESIGN FREQUENCY*

- 500 year, 0.02% annual chance
- 100 year, 1% annual chance
- 50 year, 2% annual chance
- Less than 50 year, Greater than 2% annual chance
- No Data

OTHER DATA

- Levee Protected Area
- River / Lake
- Interstate Highway
- Major Road
- County Boundary

*A specified length of time during which a structure will theoretically flood only once, i.e., a structure designed on a 100 year frequency will theoretically flood only once every 100 years, however there is a 1% chance the flood can be exceeded in any year.



LEEVE NAME

- | | | | |
|---|--|--|--|
| 01 - Dutzow / Augusta Levee System | 19 - Greens Bottom Levee Sec2 System | 37 - Muddy Creek Levee | 55 - Metro East Sanitary District #2 |
| 02 - Darst Levee System | 20 - Howard Bend Levee 2 | 38 - Harrisonville / Stringtown / Ft Chartres Levee System | 56 - Metro East Sanitary District #3 |
| 03 - Missouri University Levee System | 21 - Howard Bend Levee 4 | 39 - Columbia Drainage & Levee District No.3 System | 57 - Kuhs Levee System |
| 04 - St. Peters No. 1 Levee System | 22 - Howard Bend Levee District System | 40 - Consolidated North County Levee System | 58 - Wood River D&LD Lower System |
| 05 - Monarch Chesterfield Levee 1 | 23 - Boschert Creek East | 41 - Prairie Du Pont / Fish Lake System | 59 - Wood River D&LD East And West System |
| 06 - Monarch Chesterfield Levee District System | 24 - Boschert Creek West | 42 - Kuhs | 60 - Blue Waters Pump Station #3 |
| 07 - Monarch Chesterfield Levee 2 | 25 - Wastewater Treatment Plant Levee | 43 - Monroe Levee | 61 - Blue Waters Pump Station #1 |
| 08 - St. Peters Missouri Old Town Levee System | 26 - Howard Bend Levee 1 | 44 - St. Louis Flood Protection Project System | 62 - Blue Waters Pump Station #2 |
| 09 - St. Peters Missouri Old Town Levee 4 | 27 - Riverport Levee District System | 45 - Cora Island | 63 - Village Of Bethalto Levee |
| 10 - Greens Bottom Sec 2 | 28 - Valley Park Levee System | 46 - MESD / Chain Of Rocks East Levee System | 64 - Private Levee On Cahokia Creek |
| 11 - St. Peters Missouri Old Town Levee 2 | 29 - Earth City Levee District System | 47 - Cahokia Channel Unnamed Levee Segment #4 | 65 - St. Clair County Unnamed Levee Segment #1 |
| 12 - Greens Bottom Levee Sec1 System | 30 - Riverport Levee, Fee Fee Creek | 48 - Wood River D&LD Upper System | 66 - St. Clair County Unnamed Levee Segment #2 |
| 13 - St. Peters Missouri Old Town Levee 3 | 31 - Missouri Bottoms 2 | 49 - Cahokia Channel Unnamed Levee Segment #1 | 67 - St. Clair Unincorporated Levee 2 |
| 14 - St. Peters Missouri Old Town Levee 1 | 32 - Missouri Bottoms Levee System | 50 - Blue Waters Pump Station | 68 - St. Clair Unincorporated Levee 3 |
| 15 - Lakeside 370 Levee System | 33 - Missouri Bottoms 1 | 51 - Cahokia Channel Unnamed Levee Segment #2 | 69 - Village Of New Athens System |
| 16 - Howard Bend Levee 5 | 34 - Dunn Creek | 52 - Columbia Bottoms Levee System | 70 - Village Of New Athens St. Clair |
| 17 - Elm Point Levee System | 35 - Festus Crystal City Levee System | 53 - Chouteau Island / Chain Of Rocks West Levee System | 71 - St. Clair Unincorporated Levee 1 |
| 18 - Howard Bend Levee 3 | 36 - Mississippi River Levee | 54 - Columbia Bottoms Levee | |



Sources: United States Army Corps of Engineers, National Levee Database; East-West Gateway Council of Governments

