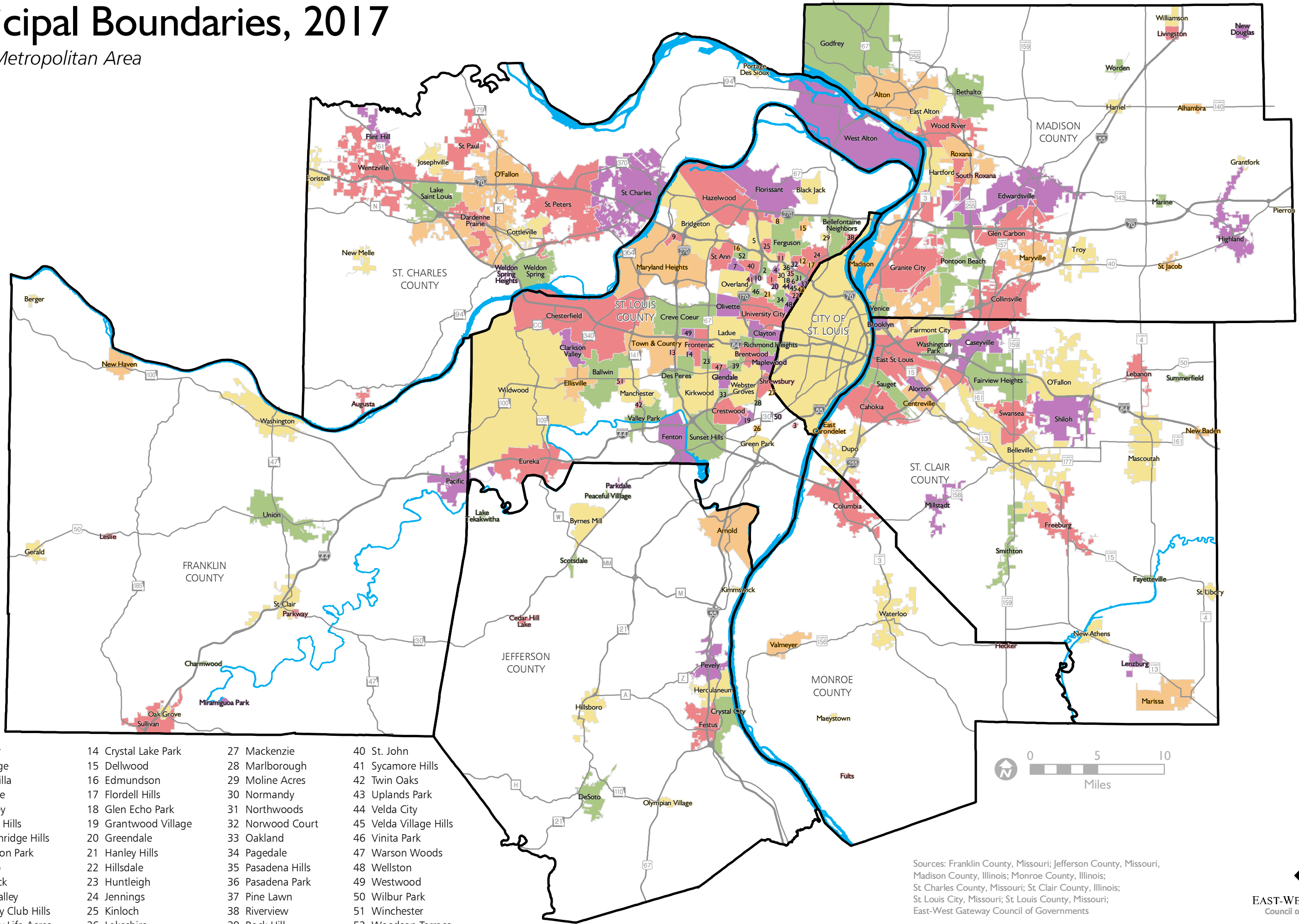


# Municipal Boundaries, 2017

St. Louis Metropolitan Area

January 2018



- |                       |                      |                   |                        |
|-----------------------|----------------------|-------------------|------------------------|
| 1 Bel-nor             | 14 Crystal Lake Park | 27 Mackenzie      | 40 St. John            |
| 2 Bel-ridge           | 15 Dellwood          | 28 Marlborough    | 41 Sycamore Hills      |
| 3 Bella Villa         | 16 Edmundson         | 29 Moline Acres   | 42 Twin Oaks           |
| 4 Bellerive           | 17 Flordell Hills    | 30 Normandy       | 43 Uplands Park        |
| 5 Berkeley            | 18 Glen Echo Park    | 31 Northwoods     | 44 Velda City          |
| 6 Beverly Hills       | 19 Grantwood Village | 32 Norwood Court  | 45 Velda Village Hills |
| 7 Breckenridge Hills  | 20 Greendale         | 33 Oakland        | 46 Vinita Park         |
| 8 Calverton Park      | 21 Hanley Hills      | 34 Pagedale       | 47 Warson Woods        |
| 9 Champ               | 22 Hilldale          | 35 Pasadena Hills | 48 Wellston            |
| 10 Charlack           | 23 Huntleigh         | 36 Pasadena Park  | 49 Westwood            |
| 11 Cool Valley        | 24 Jennings          | 37 Pine Lawn      | 50 Wilbur Park         |
| 12 Country Club Hills | 25 Kinloch           | 38 Riverview      | 51 Winchester          |
| 13 Country Life Acres | 26 Lakeshire         | 39 Rock Hill      | 52 Woodson Terrace     |



Sources: Franklin County, Missouri; Jefferson County, Missouri; Madison County, Illinois; Monroe County, Illinois; St. Charles County, Missouri; St. Clair County, Illinois; St. Louis City, Missouri; St. Louis County, Missouri; East-West Gateway Council of Governments