

Change in Population Ages 18 to 34 2000-2010

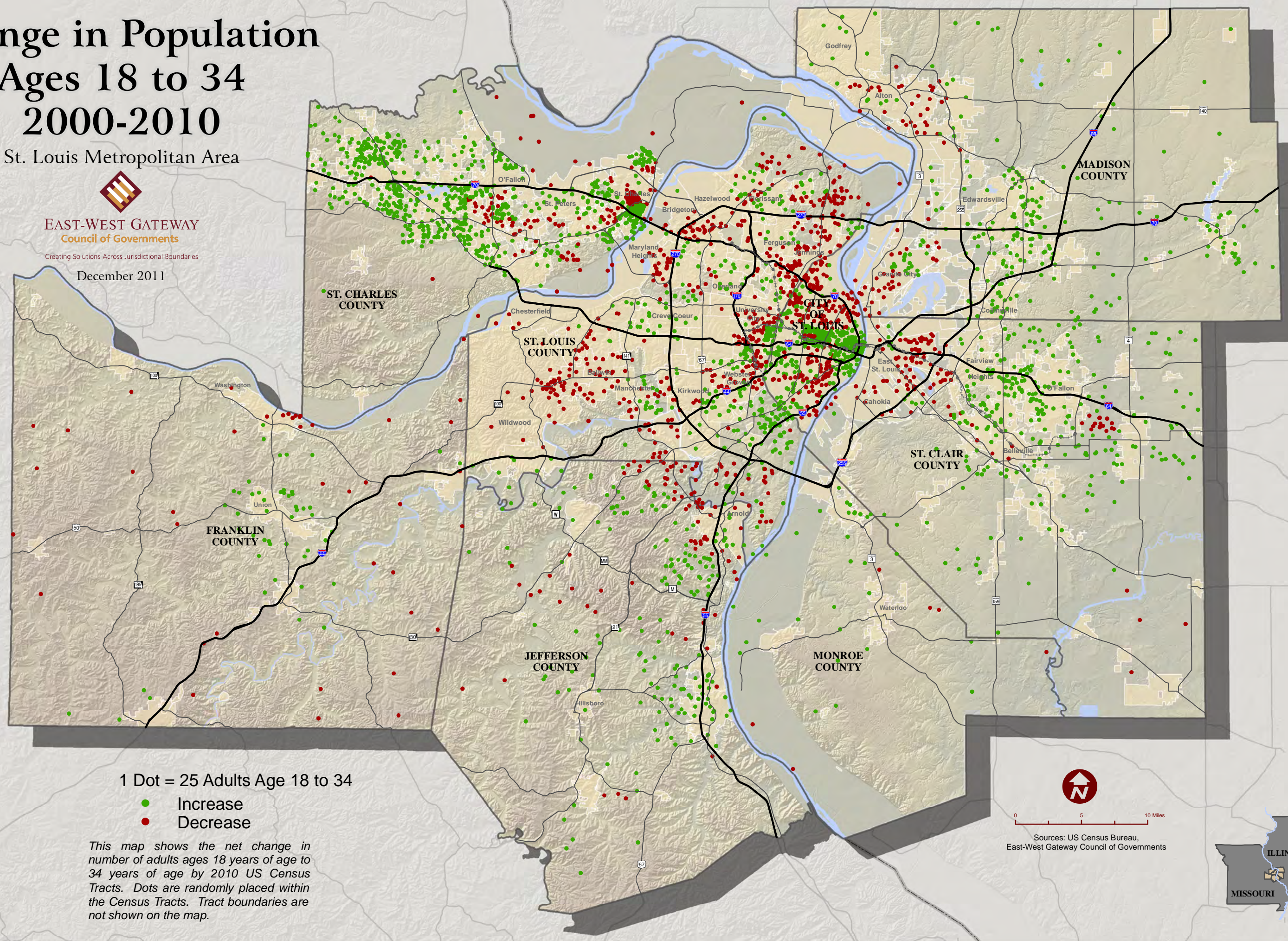
St. Louis Metropolitan Area



EAST-WEST GATEWAY
Council of Governments

Creating Solutions Across Jurisdictional Boundaries

December 2011



1 Dot = 25 Adults Age 18 to 34

- Increase
- Decrease

This map shows the net change in number of adults ages 18 years of age to 34 years of age by 2010 US Census Tracts. Dots are randomly placed within the Census Tracts. Tract boundaries are not shown on the map.



Sources: US Census Bureau,
East-West Gateway Council of Governments

