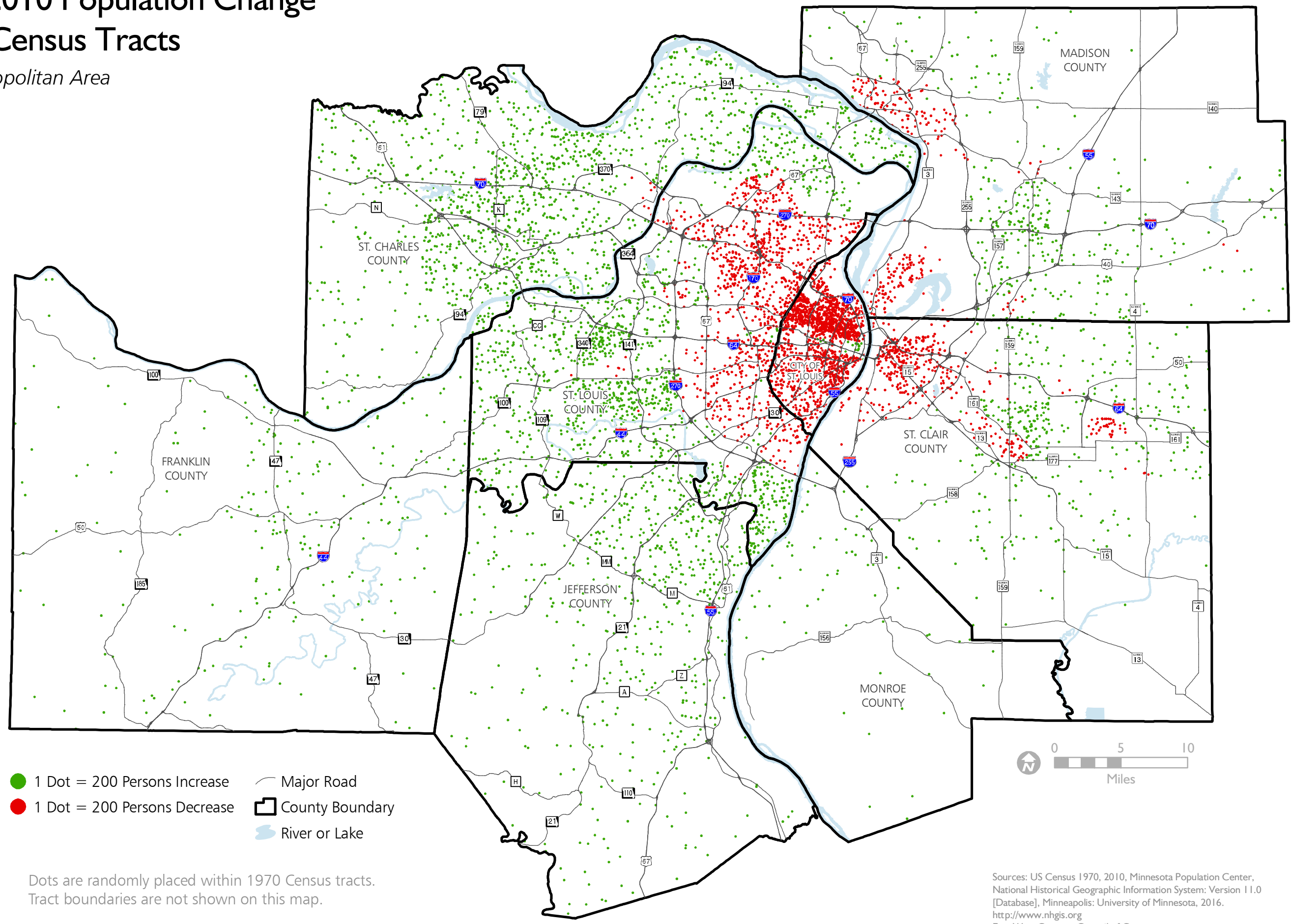


1970 to 2010 Population Change by 1970 Census Tracts

St. Louis Metropolitan Area

November 2016



- 1 Dot = 200 Persons Increase
- 1 Dot = 200 Persons Decrease
- Major Road
- ▭ County Boundary
- River or Lake

Dots are randomly placed within 1970 Census tracts.
Tract boundaries are not shown on this map.

Sources: US Census 1970, 2010, Minnesota Population Center,
National Historical Geographic Information System: Version 11.0
[Database], Minneapolis: University of Minnesota, 2016.
<http://www.nhgis.org>
East-West Gateway Council of Governments