

# Municipal Boundaries, 2000

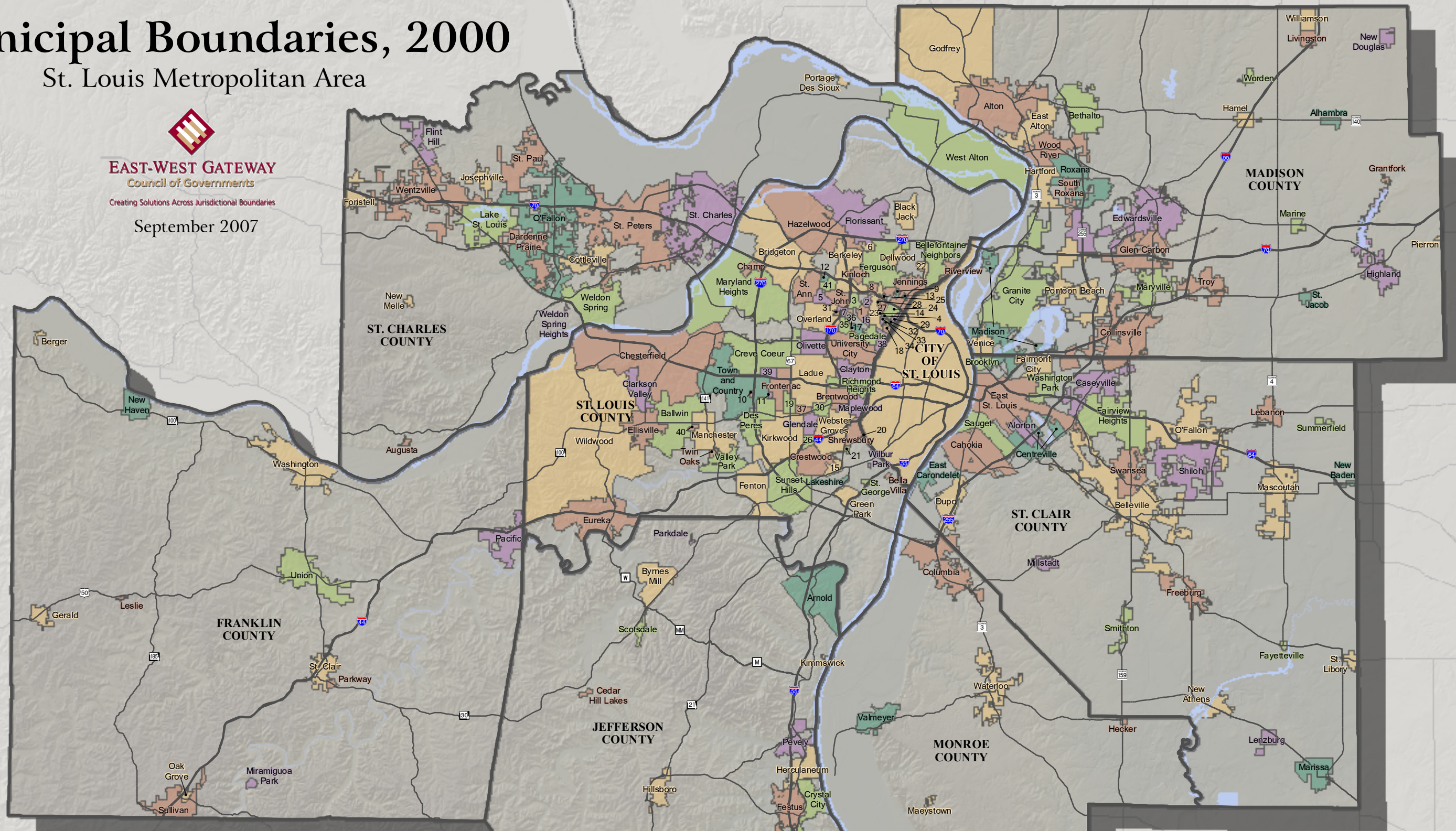
St. Louis Metropolitan Area



**EAST-WEST GATEWAY**  
Council of Governments

Creating Solutions Across Jurisdictional Boundaries

September 2007



- |                       |                      |                        |
|-----------------------|----------------------|------------------------|
| 1 Bel-Nor             | 15 Grantwood Village | 29 Pine Lawn           |
| 2 Bellerive           | 16 Greendale         | 30 Rock Hill           |
| 3 Bel-Ridge           | 17 Hanley Hills      | 31 Sycamore Hills      |
| 4 Beverly Hills       | 18 Hillsdale         | 32 Uplands Park        |
| 5 Breckenridge Hills  | 19 Huntleigh         | 33 Velda City          |
| 6 Calverton Park      | 20 Mackenzie         | 34 Velda Village Hills |
| 7 Charlack            | 21 Marlborough       | 35 Vinita Park         |
| 8 Cool Valley         | 22 Moline Acres      | 36 Vinita Terrace      |
| 9 Country Club Hills  | 23 Normandy          | 37 Warson Woods        |
| 10 Country Life Acres | 24 Northwoods        | 38 Wellston            |
| 11 Crystal Lake Park  | 25 Norwood Court     | 39 Westwood            |
| 12 Edmundson          | 26 Oakland           | 40 Winchester          |
| 13 Floridell Hills    | 27 Pasadena Hills    | 41 Woodson Terrace     |
| 14 Glen Echo Park     | 28 Pasadena Park     |                        |

