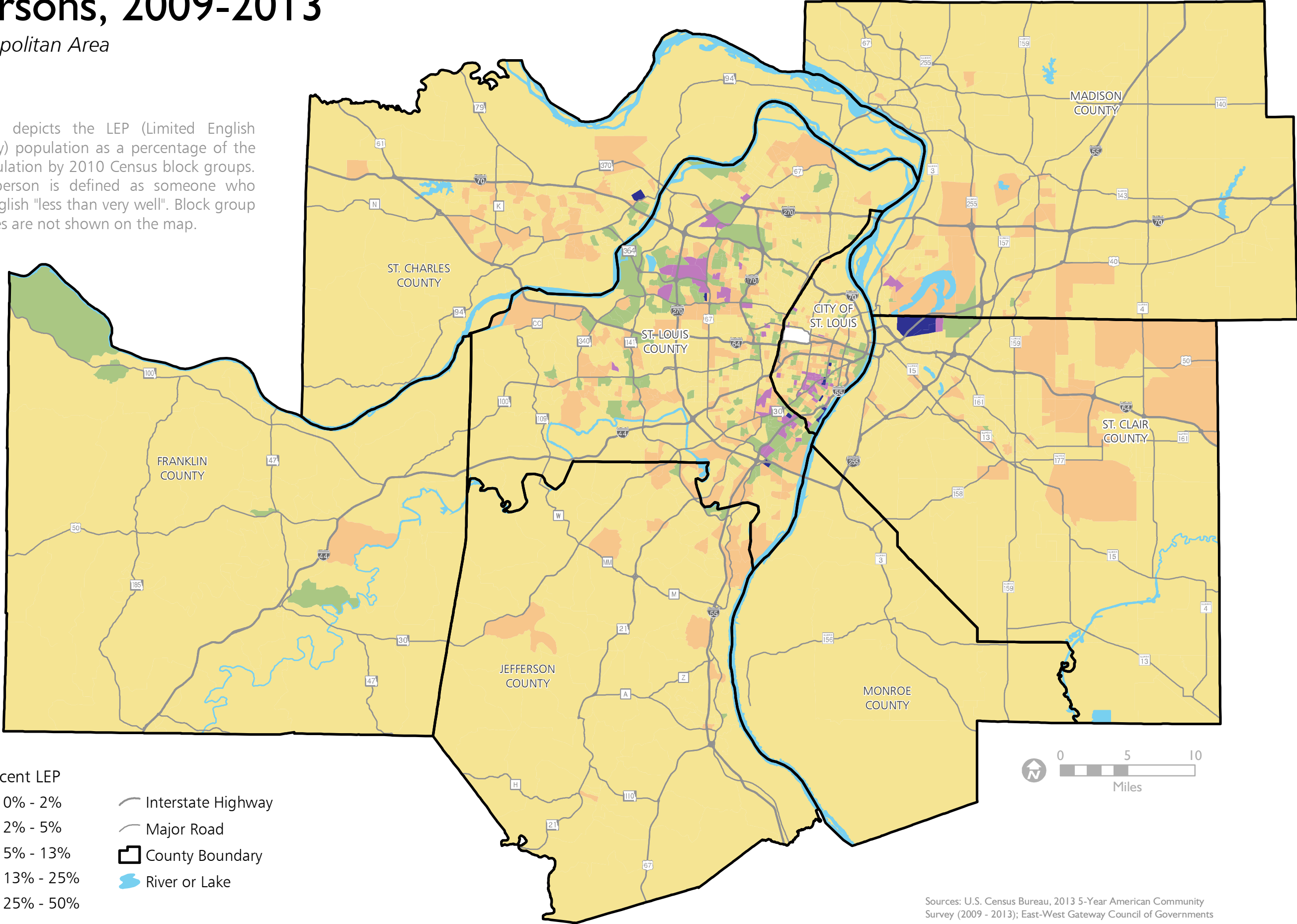


LEP Persons, 2009-2013

St. Louis Metropolitan Area

October 2015

This map depicts the LEP (Limited English Proficiency) population as a percentage of the total population by 2010 Census block groups. An LEP person is defined as someone who speaks English "less than very well". Block group boundaries are not shown on the map.



Percent LEP

- 0% - 2%
- 2% - 5%
- 5% - 13%
- 13% - 25%
- 25% - 50%

- Interstate Highway
- Major Road
- County Boundary
- River or Lake



Sources: U.S. Census Bureau, 2013 5-Year American Community Survey (2009 - 2013); East-West Gateway Council of Governments