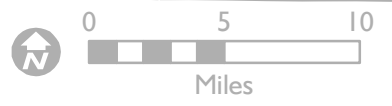
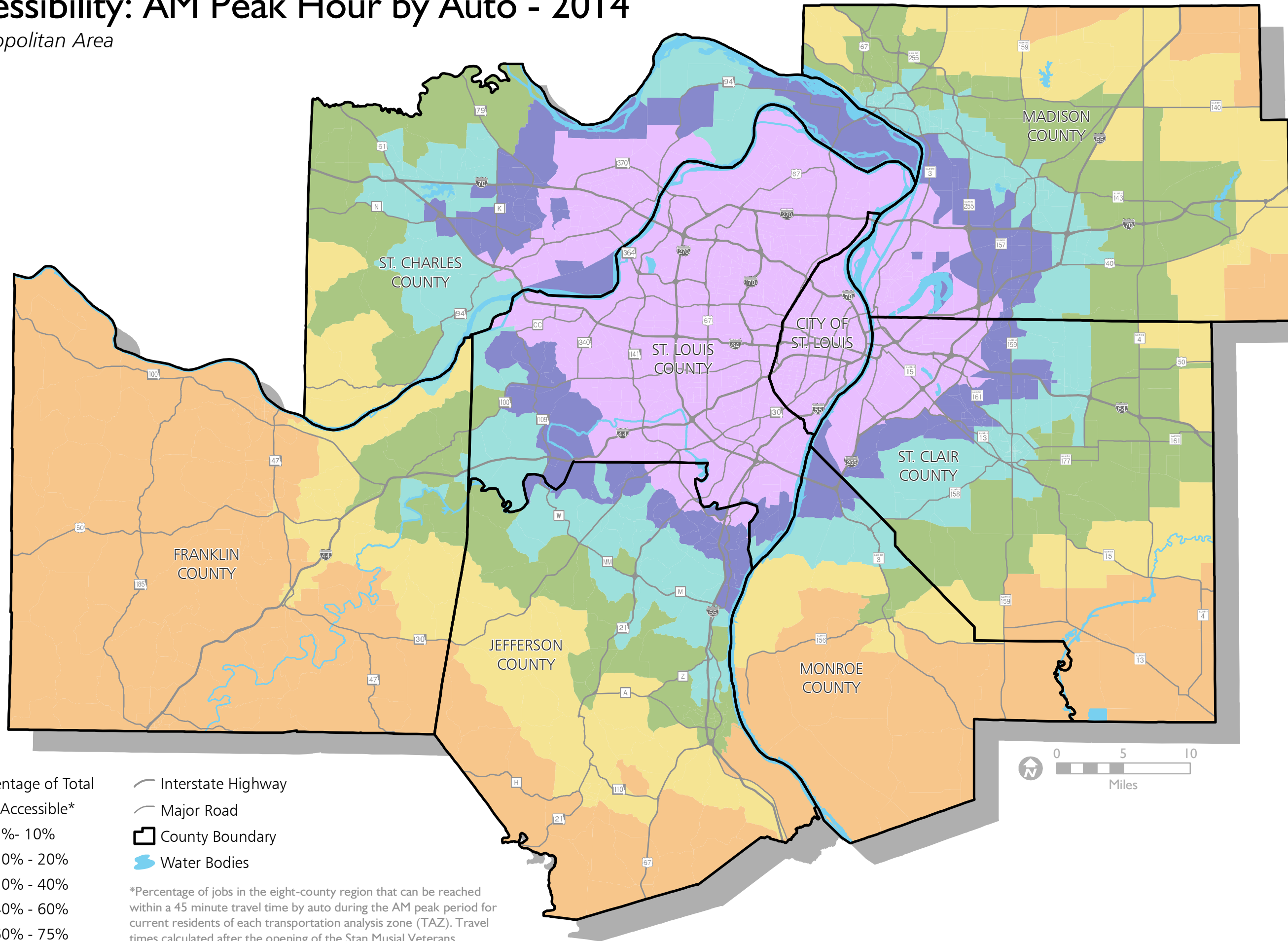


Job Accessibility: AM Peak Hour by Auto - 2014

St. Louis Metropolitan Area

January 2015



*Percentage of jobs in the eight-county region that can be reached within a 45 minute travel time by auto during the AM peak period for current residents of each transportation analysis zone (TAZ). Travel times calculated after the opening of the Stan Musial Veterans Memorial Bridge.

Source: East-West Gateway Council of Governments