

Fatal Crashes 2000-2005

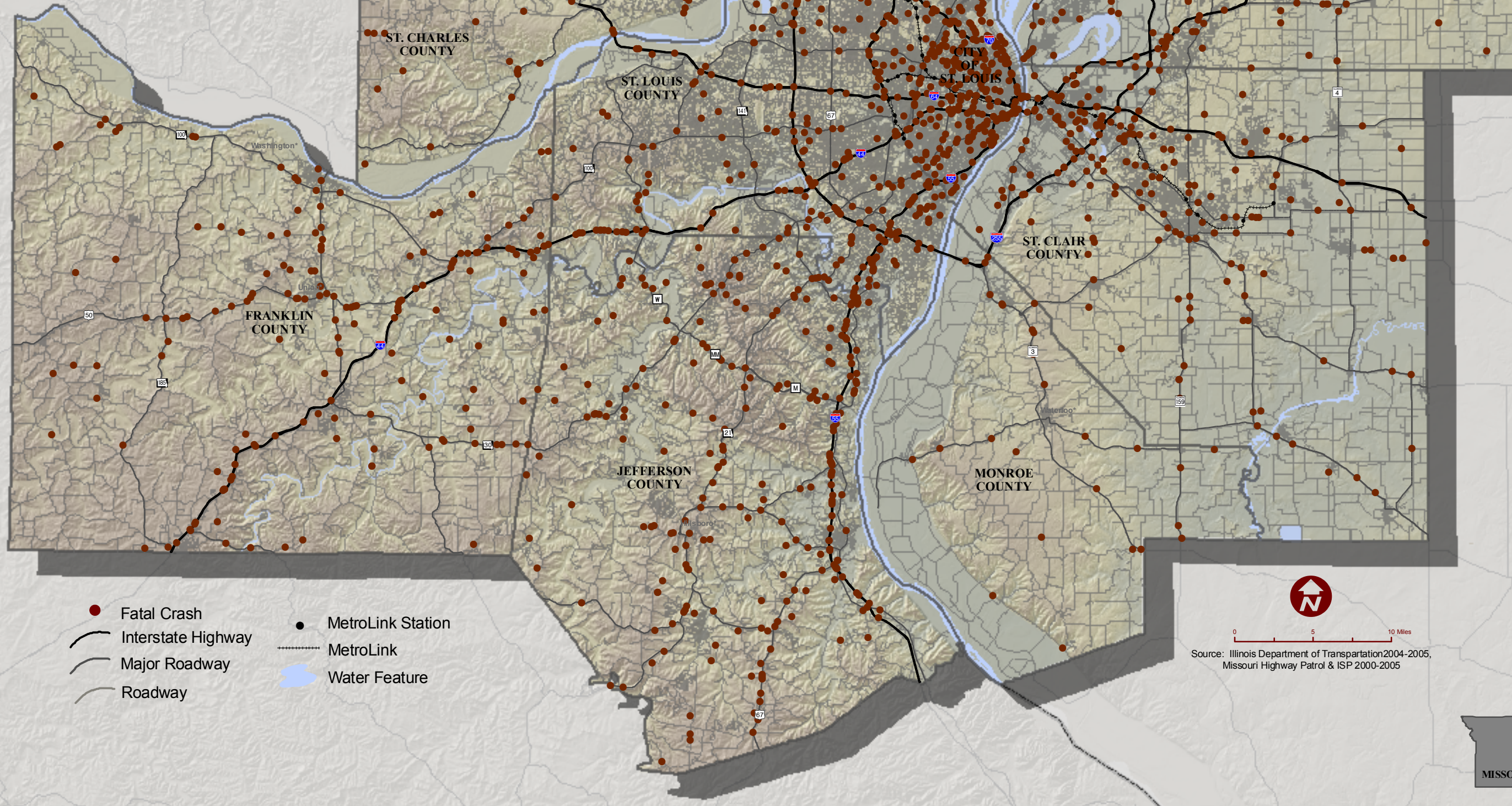
St. Louis Metropolitan Area



EAST-WEST GATEWAY
Council of Governments

Creating Solutions Across Jurisdictional Boundaries

September 2007



- Fatal Crash
- Interstate Highway
- Major Roadway
- Roadway
- MetroLink Station
- - - MetroLink
- Water Feature

0 5 10 Miles
Source: Illinois Department of Transportation 2004-2005,
Missouri Highway Patrol & ISP 2000-2005

