

# Development Difference

## Full Build vs. No Build Scenarios through 2040

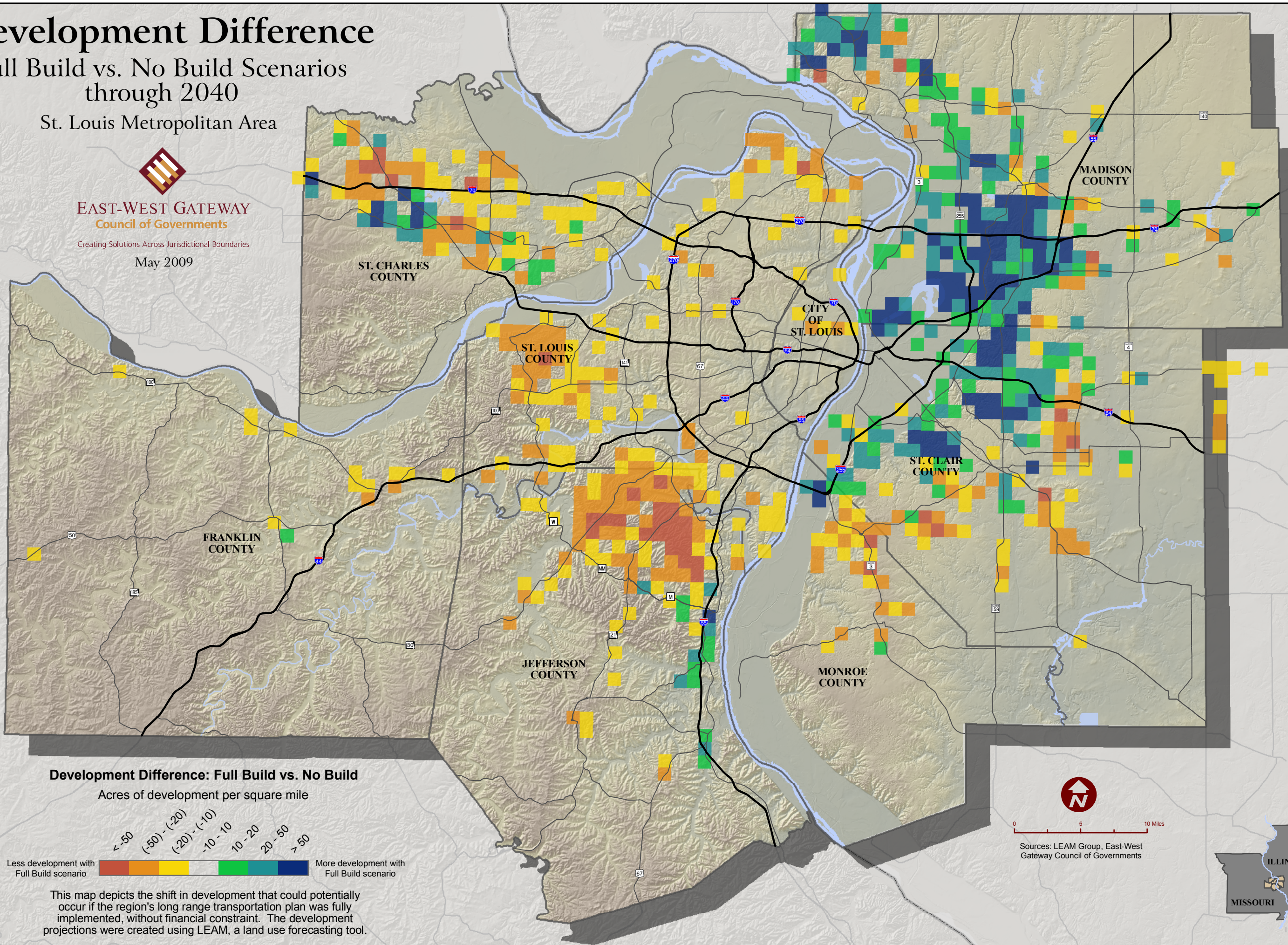
### St. Louis Metropolitan Area



**EAST-WEST GATEWAY**  
Council of Governments

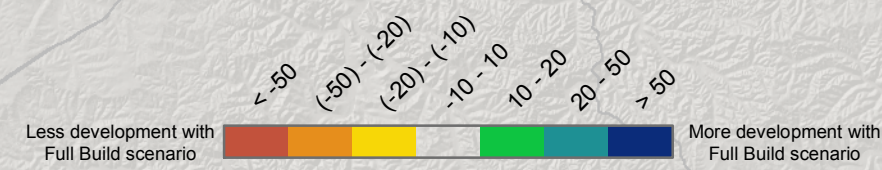
Creating Solutions Across Jurisdictional Boundaries

May 2009



### Development Difference: Full Build vs. No Build

Acres of development per square mile



This map depicts the shift in development that could potentially occur if the region's long range transportation plan was fully implemented, without financial constraint. The development projections were created using LEAM, a land use forecasting tool.



Sources: LEAM Group, East-West Gateway Council of Governments

