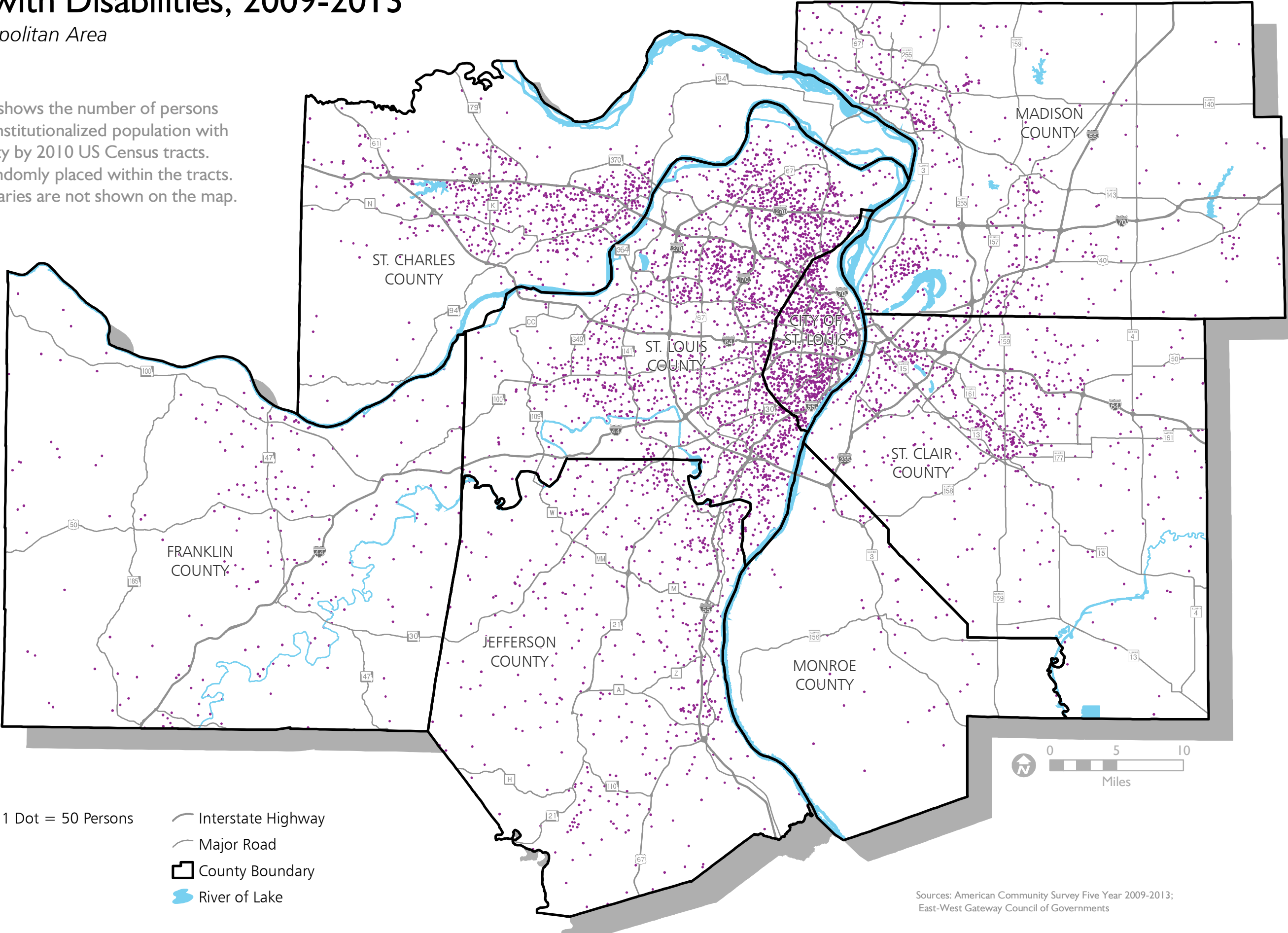


Persons with Disabilities, 2009-2013

St. Louis Metropolitan Area

June 2015

This map shows the number of persons in the non-institutionalized population with a disability by 2010 US Census tracts. Dots are randomly placed within the tracts. Tract boundaries are not shown on the map.



- 1 Dot = 50 Persons
- Interstate Highway
- Major Road
- ▭ County Boundary
- River of Lake

Sources: American Community Survey Five Year 2009-2013; East-West Gateway Council of Governments